



BETTER SCIENCE. BRILLIANT WATER.®

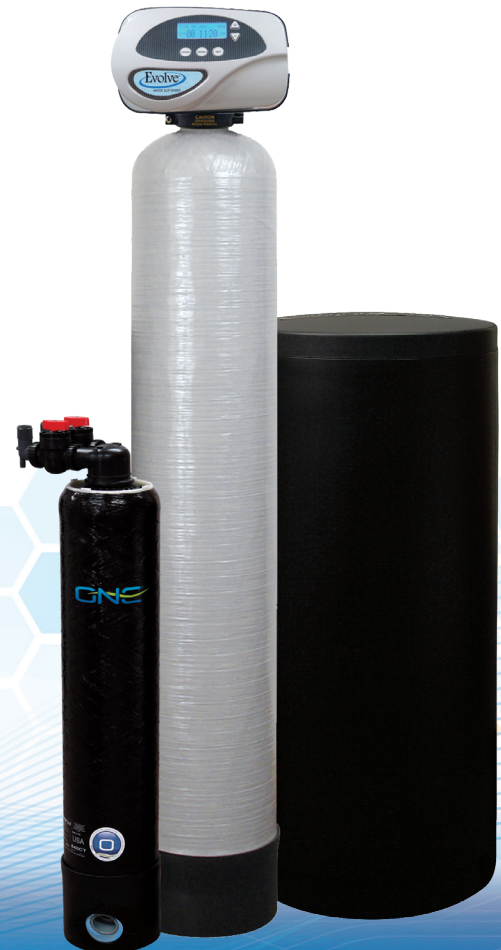
WATER FILTRATION SIMPLIFIED™

When it comes to your water, enjoy the piece of mind our contaminant reduction system can provide for your family. The combination of a specialized ONE™ cartridge filter and the advanced technology behind our Evolve softeners is the perfect solution to some of the most difficult contaminants.

This two stage system is certified to protect your home from lead, cysts, and other harmful contaminants such as PFOA and PFOS.* Accompanied by an Evolve softener or filter, your home is assured the best quality water possible. The softener system would add the reduction of hardness minerals, like calcium, to prevent scale build up in your plumbing, on your fixtures, and inside your appliances. Building the system with an Evolve filter would help reduce sulfur, odor, iron, red stains and turbidity.

The electronics behind the Evolve softener or filter will track the lifespan of the unique ONE cartridge, monitoring its capacity for up to 100,000 gallons of use.

** This product has been certified by IAPMO R&T according to NSF/ANSI 53 for lead and cyst reduction and NSF P473 for PFOA/PFOS reduction.*



SYSTEM FEATURES

- Whole-house water treatment system
- Designed to handle high flow rates
- Automatic cartridge replacement alerts
- Simple cartridge replacement design

Every home deserves water that they can trust. As your authorized Evolve dealer, we will analyze your water and recommend the treatment solution that best fits your needs.





A group of harmful, man-made chemicals called PFAS (or per- and poly-fluoroalkyl substances) includes the contaminants PFOA, PFOS, and many others best known for their non-stick capabilities. They have been used in a variety of industries in the United States and around the globe for years. These chemicals are very persistent when exposed to our environment and in the human body — meaning they don't break down and can accumulate over time. There is evidence that exposure to PFAS chemicals can be harmful to your health.

Even some natural contaminants are cause for concern. The adverse effects of lead have been known for years, especially for children. Our cartridge filter offers the benefit of high-performance carbon block technology to combat these natural and manufactured contaminants in your water.

THE PERFECT MATCH

An Evolve softener or filter completes the package with advanced electronics to help meter the water treated, also known as our Performance Indication Device (PID). Together, the system is certified to effectively treat 100,000 gallons of water before the cartridge needs to be replaced. At that time, the softener will notify you that a filter change is necessary. Protect the health and safety of your family with a system you can trust.



Please see our Evolve line of products for complete details on their features and capabilities.

FILTRATION CARTRIDGE SPECIFICATIONS

Performance Claims - This system has been tested for the reduction of the substances listed below. The concentration of the indicated substances in water entering the system was reduced to a concentration less than equal to the permissible limit for water leaving the system. This product has been certified by IAPMO R&T according to NSF/ANSI 53 for lead and cyst reduction and NSF P473 for PFOA/PFOS reduction.

ONE Filter CW-840-PB	CONTAMINANT	RATED FLOW	PRESSURE DROP (PSI)	CAPACITY (GALLONS)	INFLUENT CHALLENGE WATER	MAX. ALLOWED IN EFFLUENT WATER	AVERAGE PERCENT REDUCTION (%)	PEAK FLOW / CAPACITY
	Lead	4.51 GPM	9.0	100,000	0.15 +/- 10% mg/L	0.005 mg/L	99.62	8 GPM / 88,000 GAL
	PFOA/PFOS	4.51 GPM	9.0	100,000	1.5 +/- 10% ug/L	0.07 ug/L	98.18	
	Cyst	4.51 GPM	9.0	100,000	Min 50,000 / L	—	99.95	

Do not use with water that is microbiologically unsafe or of unknown quality without adequate disinfection before or after the system. System may be used for cyst reduction on disinfected waters that may contain filterable cyst; please check for local regulations/codes before installation. Please see performance data sheet for more details.

Replacement cartridge part #: CT-05-CB-AMCYL-IO

EPA Est #092577-OH-001



Your local authorized Evolve dealer:



© 2019 Evolve All rights reserved. 8/22