



## THE TWIN ADVANTAGE

Soft water is important for modern day living. Whether you have a larger home or value quality water for your business, a standard softener may not be able to keep up with your needs.

The Twin Intermediate Line (TIL) is designed for light commercial water users such as restaurants, office buildings, laboratories, dairy farms and car washes. Twelve models are available with flow rates ranging from 9.25 to 37 gpm to provide a wide range of solutions for your soft water needs.

The Twin Intermediate Line is an exclusive product line of Hague Quality Water. Hague prides themselves on manufacturing the highest quality systems for every application. As your local Hague dealer, we can bring you the benefits of soft water quickly and easily with these worry-free solutions.



### Saves on Labor

requires less cleaning time



### Saves Energy

savings of 21% to 29%



### Saves Maintenance Cost

results in less scale build-up



### Use Less Cleaning Agents

reduces soap usage up to 75%

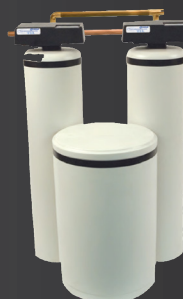
**HAGUE**  
Quality Water International®

## A VARIETY OF MODELS AND SIZES FOR EVERY APPLICATION

- ① **PATENTED VALVE:** Unique design with built-in bypass and digital controller.
- ② **HIGH CAPACITY TANKS:** Maximum resin depth for longer water contact time.
- ③ **GRAVEL BEDDING:** Providing consistent water flow throughout the unit.
- ④ **MULTIPLE TANK CONFIGURATION:** Provides additional treated water for homes and businesses with a high demand.
- ⑤ **LARGER BRINE TANK:** Holds enough salt to support both tanks providing maximum efficiency.



(MODEL T48 SHOWN)



### TWO OF THE MANY MODELS AVAILABLE

#### T80

- 1.25 cubic feet of resin per tank
- 18" x 33" brine tank
- 25 gpm regular flow rates



#### T210

- 3.3 cubic feet of HCR resin per tank
- 24" x 50" brine tank
- 37 gpm regular flow rates
- System is expandable to accommodate additional media tanks

**All available models:** T48, T80, T210, T48CX, T60CX, T80CX, T96CX, T128CX, T210CX



4343 S. Hamilton Road | Groveport, OH 43125  
614-836-2115 | Fax: 614-836-5349